

# **PENN MEDICINE DEPARTMENT OF NEUROLOGY ONBOARDING RESOURCE GUIDE**

**2025**

**INFORMATION AND RESOURCES FOR ALL MEMBERS OF THE  
DEPARTMENT OF NEUROLOGY**

**NEUROLOGY ADMINISTRATION | 215-662-2700**

**[WWW.MED.UPENN.EDU/NEUROLOGY](http://WWW.MED.UPENN.EDU/NEUROLOGY)**

## TABLE OF CONTENTS

1. [FROM THE DESK OF THE CHAIR](#)
2. [MISSION](#)
3. [FACULTY LEADERSHIP ORG CHART](#)
4. [EXECUTIVE COMMITTEE](#)
5. [PROGRAM STRUCTURE](#)
6. [TRANSLATIONAL CENTERS OF EXCELLENCE](#)
7. [LEADERSHIP CONTACTS](#)
8. [ADMINISTRATION CONTACTS](#)
9. [FOR PENN MEDICINE EMPLOYEES](#)
10. [FOR PSOM EMPLOYEES](#)
11. [VIRTUAL HEADSHOT FOR PROVIDERS](#)
12. [RESEARCH AND LAB SET UP](#)
13. [NEUROLOGY CONTACTS](#)



## FROM THE DESK OF THE CHAIR



Welcome to the Department of Neurology at the Perelman School of Medicine at the University of Pennsylvania and University of Pennsylvania Health System! In Neurology, we work to develop effective treatments and therapies that require the expertise, dedication and cooperation of scientists from many fields of research to treat basic and complex neurological disorders. Established in 1871, by Dr. Horatio Wood, the Department of Neurology is the oldest

Department in the country with a history of excellence in patient care, research and education in both adult and pediatric neurology. Today, Penn Neurology faculty members are engaged in groundbreaking research and clinical trials involving many complex neurological disorders. The Department includes over 130 full-time and associated faculty with a full range of clinical activities, based at the Perelman School of Medicine (PSOM), University of Pennsylvania Health System (UPHS), and Children's Hospital of Philadelphia (CHOP).

The Department and its residency programs at Penn and CHOP have been ranked highest in the region and overall the clinical specialties at the Hospital of the University of Pennsylvania have been consistently ranked among the nation's best. It has been in the top ten Neurology Departments with respect to NIH funding during the last ten years. We have active research programs in Alzheimer's Disease, Fronto-temporal Dementia, Parkinson's Disease, Epilepsy, Stroke, Cognitive/Behavioral Neurology, Neuromuscular Disease and ALS, Autoimmune Neurology, Multiple Sclerosis, Neuro-Ophthalmology, Neuro-oncology, Neurovirology, Functional neuroimaging and more!

The Department has a long tradition of excellence in the education of future leaders in the field of neurology. Its educational programs are highly acclaimed and the residency program is considered one of the best in the country, offering the opportunity to work with the leaders in neurological care and research, utilizing state-of-the-art resources, backed by a world-renowned medical center. The program is fully accredited for 42 Residents in adult and 21 Residents in pediatric neurology and is approved by the ACGME for 10 years. Eighty-five percent of Residents trained in the last 25 years currently hold academic positions.

This year marks a particularly proud moment in Penn Neurology as we move our in-patient teams to the Pavilion Building. Complete with state-of-the-art facilities, including a 3T research MRI and innovative Epilepsy Monitoring Unit, the care we will provide our patients will be bar none.

Welcome to Penn Neurology!



Frances Jensen, MD

Professor and Chair, Department of Neurology



## OUR MISSION

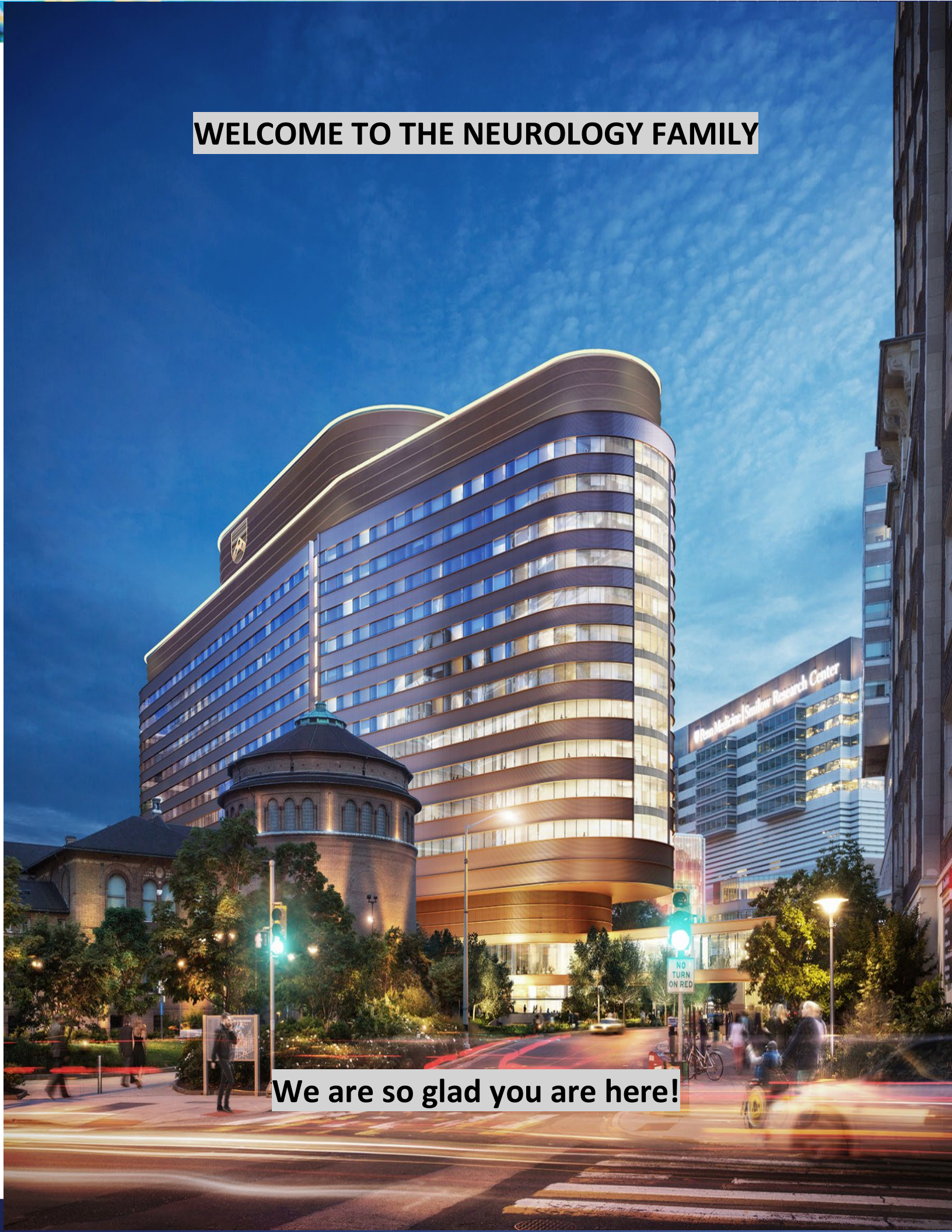
The Department of Neurology has a strong mission and a rich history at the University of Pennsylvania. We have a long tradition of excellence in patient care, research and education in both adult and pediatric neurology. Since its establishment more than a century ago, our department has shaped the field of neurology by pioneering essential neurologic treatments and diagnostic techniques. Today, we are committed to our mission – to be a center of excellence and innovation dedicated to the pursuit of curing neurologic diseases through compassionate, patient-centered care, transformative research and education of the future leaders in neurology.

### THE DEPARTMENT OF NEUROLOGY PHOTO





**WELCOME TO THE NEUROLOGY FAMILY**



**We are so glad you are here!**



## Neurology Firsts

- Nation's First Neurology Department in the USA
- Established the first Comprehensive Multiple Sclerosis Center in USA
- First NIH Program Project Grant for Neuromuscular Disorders with G. Milton Shy
- Opened Penn Center for Neuroaesthetics in 2018
- 2015 Contribution of subclinical seizures to outcomes in critically ill children
- First successful treatment with baricitinib of the Aicardi-Goutières syndrome



1885 The Hospital of the University of Pennsylvania –  
later became Silverstein Pavilion in 1978

## Follow Neurology on Social Media!

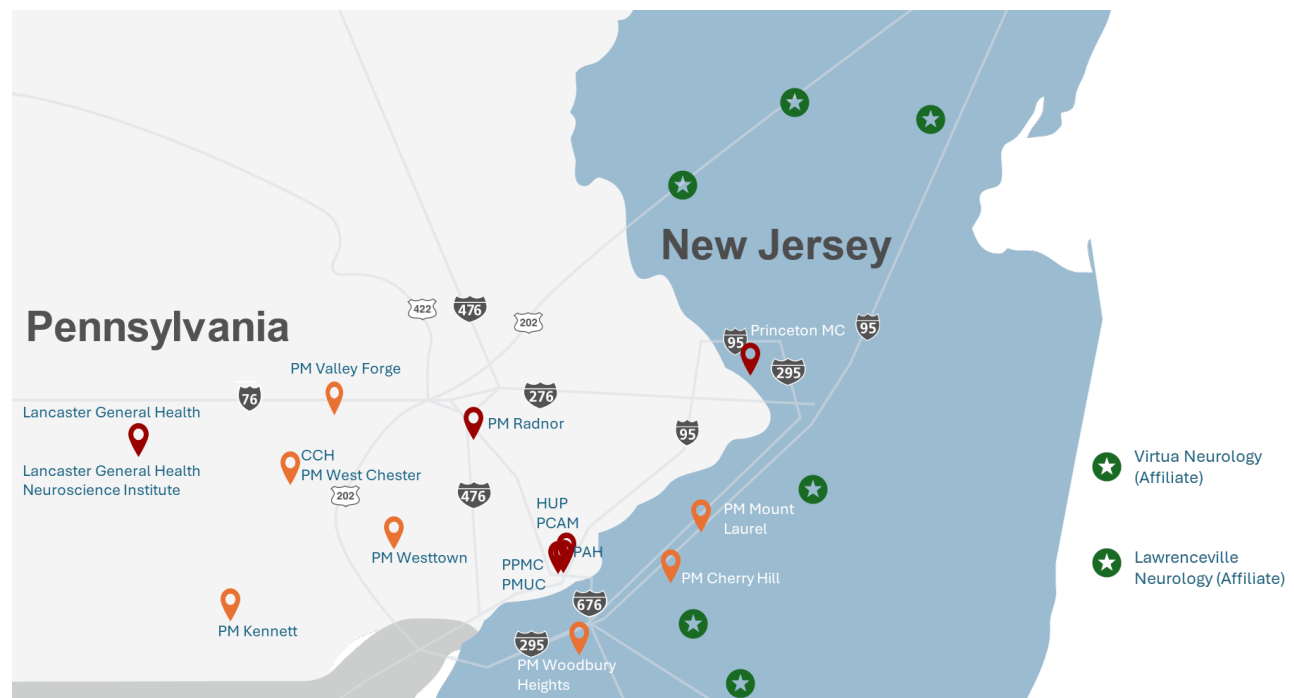
Twitter: @pennneurology

Facebook: Penn Neurology

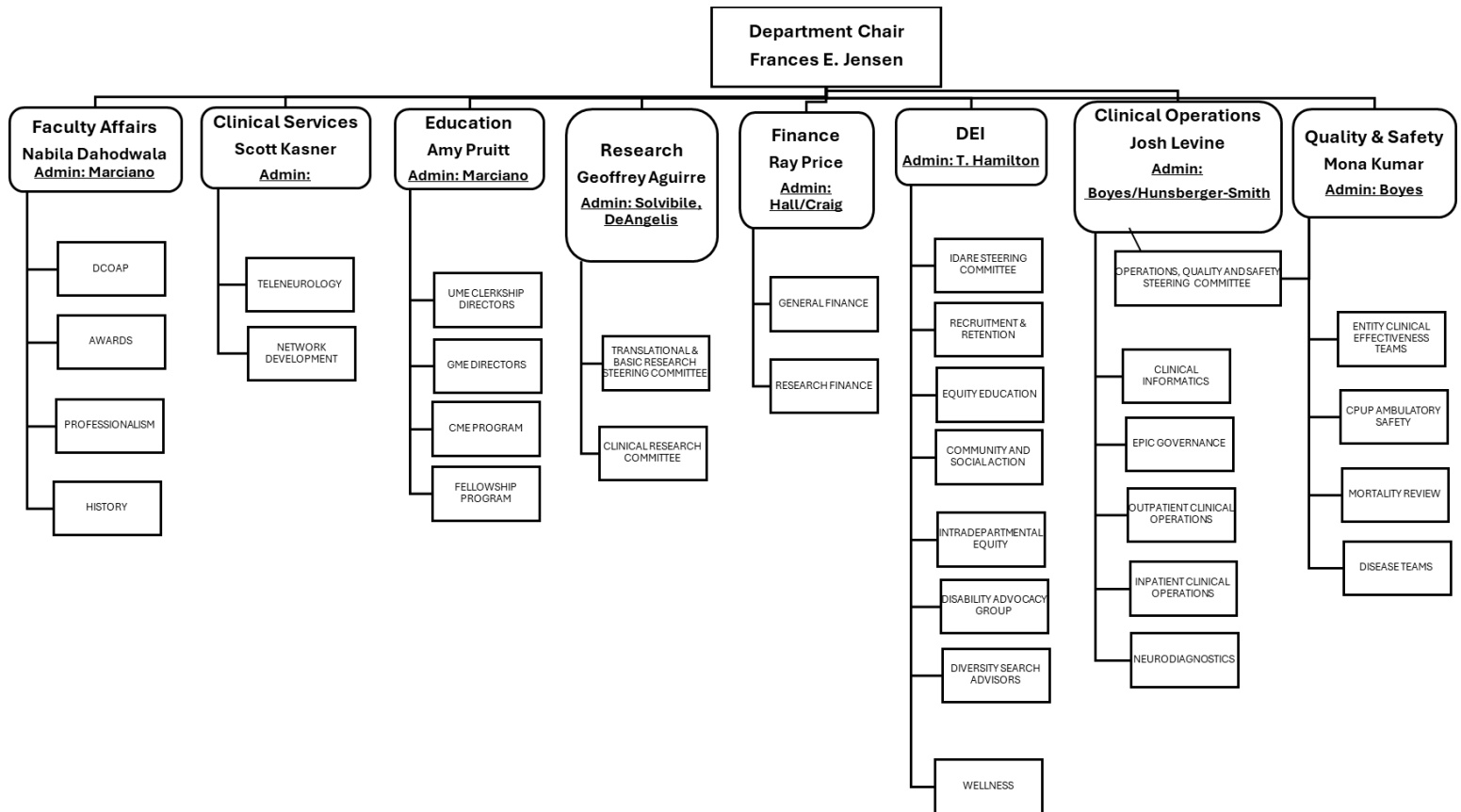
Instagram: penn\_neurology\_residency

## OUR LOCATIONS

<b>Penn Med Chalfont</b>	<b>700 Horizon Circle, Chalfont, PA 18914 Suite 101</b>
<b>Penn Med Valley Forge</b>	<b>1001 Chesterbrook Boulevard, Berwyn, PA 19312</b>
<b>Penn Med Radnor</b>	<b>145 King of Prussia Rd, Radnor, PA 19087</b>
<b>Philadelphia VAMC</b>	<b>3900 Woodland Avenue, Philadelphia, PA 19104</b>
<b>Penn Med University City</b>	<b>3737 Market Street, Philadelphia, PA 19104</b>
<b>Perelman Center for Advanced Medicine</b>	<b>3400 Civic Center Blvd, Philadelphia, PA 19104</b>
<b>Pennsylvania Hospital</b>	<b>800 Spruce Street, 1 Pine West, Philadelphia, PA 19107</b>
<b>Lancaster General</b>	<b>2102 Harrisburg Pike Ste 301, Lancaster, PA 17601</b>
<b>Penn Med Kennett</b>	<b>402 McFarlan Road, Kennett Medical Center, Suite 102, Kennett Square, PA 19348</b>
<b>Penn Med Westtown</b>	<b>1055 Andrew Drive, Suite B, West Chester, PA 19380</b>
<b>Penn Med West Chester</b>	<b>1055 Andrew Drive, Suite B, West Chester, PA 19380</b>
<b>Penn Med Woodbury Heights</b>	<b>1006 Mantua Pike, Woodbury Heights, NJ 08097</b>
<b>Penn Med Cherry Hill</b>	<b>1865 Route 70 East, Cherry Hill, NJ 08003</b>
<b>Penn Med Mount Laurel</b>	<b>5000 Dearborn Circle Ste 100B, Mount Laurel, NJ 08054</b>



## Leadership Structure



### 16 DIVISIONS

General Neurology  
Stroke  
Cognitive Neurology  
Epilepsy  
Headache  
Movement Disorders  
Multiple Sclerosis  
Neurocritical Care  
Neuromuscular  
Neuro-oncology  
Neuro-ophthalmology  
Neuropsychology  
Sleep  
Nursing  
Neurohospitalist  
Child Neurology (CHOP)

### PATIENT VOLUMES

#### Penn:

>98K per year outpatient  
~68K CPUP  
~30K PSP  
3 central inpatient sites  
>2200 discharges  
7 off-site inpatient sites  
6+ satellite locations and affiliates

#### CHOP

>40,300 outpatient  
>14,200 inpatient days

### RESEARCH PRODUCTIVITY

#### Penn:

>\$50M in research funding  
~60% federal  
47 R01, 5 U, 6 P level grants  
380 funded projects

#### Research Training Penn/CHOP

5 T32 postdoc grants- 14 fellows  
R25 grant – 10+ recipients  
20 K award recipients

### EDUCATION

#### UME Top 3 clerkships

#### GME Residency Ranked #5 USNWR

Penn 42 residents | 14 residents/yr  
CHOP 35 residents | 7 residents/yr  
14 Penn Clinical Fellowship Programs  
~36 clinical fellows  
9 CHOP Fellowship Programs

Active assistant, associate and full profs:

~228	Faculty	22%	Tenure
70	CHOP	6%	Research Faculty
158	PENN	40%	Clinical Educator
		52%	Academic Clinician

PHOTO OF



## EXECUTIVE COMMITTEE

The Committee meets monthly following our department finance committee meeting. All vice chairs are present to discuss relevant topics related to finance, operations, recruitment and research. The chair of the department leads all discussions. Relevant health system governance topics are often addressed.

### Committee Members:

Chair	Frances Jensen, MD, FACP
Vice Chair Clinical Affairs	Scott Kasner, MD
Vice Chair Education	Amy Pruitt, MD
Vice Chair Research	Geoffrey Aguirre, MD
Vice Chair Inclusion/Diversity	Nabila Dahodwala, MD, MS
Vice Chair Operations	Josh Levine, MD
Vice Chair Quality/Improvement	Monisha Kumar, MD
Vice Chair Faculty Development/Affairs	Nabila Dahodwala, MD, MS
Vice Chair Finance	Grant Liu, MD
Assistant Chief Medical Information Officer for Data and Analytics	David Do, MD
PSP Regional Director	Seth Haplea, MD
Site Chief: Pennsylvania Hospital	Ray Price, MD
Site Chief: Presbyterian Hospital	Sashank Prasad, MD
Site Chief: VA Hospital	Allison Willis, MD
Site Chief: CHOP	Brenda Banwell, MD

<b>NEUROLOGY DIVISIONS</b>	
<b>Cognitive Division</b>	<b>David Wolk, MD</b>
<b>Neuromuscular Disorders Division</b>	<b>Chafic Karam, MD</b>
<b>Stroke/Vascular Division</b>	<b>Scott Kasner, MD</b>
<b>Epilepsy Division</b>	<b>Kathryn Davis, M.D., M.S.T.R.</b>
<b>Neurocritical Care Division</b>	<b>Joshua Levine, MD</b>
<b>Sleep Neurology Division</b>	<b>David Raizen, MD, PhD</b>
<b>General Neurology Division</b>	<b>Amy Pruitt, MD</b>
<b>Neuro-Ophthalmology Division</b>	<b>Grant Liu, MD</b>
<b>Movement Disorders Division</b>	<b>Andrew Siderowf, MD</b>
<b>Multiple Sclerosis and Related Disorders Division</b>	<b>Amit Bar-Or, MD, FRCP, FAAN, FANA</b>
<b>Neuropsychology Division</b>	<b>Dawn Hamilton-Mechanic, PhS, ABPP-CN</b>
<b>Pediatric Neurology Chop Division</b>	<b>Brenda Banwell, MD</b>
<b>Neurohospitalist Division</b>	<b>Ray Price, MD</b>
<b>Headache Division</b>	<b>Seniha Ozudogru, MD</b>
<b>Neuro-Oncology Division</b>	<b>Richard Phillips, MD, PhD</b>



<b>Program Name</b>	<b>Director/Assistant/Associate Program Director</b>
Cognitive and Behavioral Neurology	Sanjeev Vaishnavi, MD
Neuroimmunology to include Multiple Sclerosis (MS)	Jennifer Orthmann-Murphy, MD, PhD - co-director Rohini Samudralwar, MD - co-director
Epilepsy	Saurabh Sinha, MD, PhD Genna Waldman - Associate PD
Intracranial Electroencephalography	Saurabh Sinha, MD, PhD
Clinical Neurophysiology	Saurabh Sinha, MD, PhD
Neuro-Ophthalmology	Kenneth Shindler, MD, PhD
Neurohospitalist	Anne Douglas, MD Daniel Cristancho, MD - Associate PD
Neuro-Oncology	Richard Phillips, MD, PhD
Vascular Neurology (Stroke)	Donna George, MD Steven Messe, MD - Associate PD
Neuromuscular Medicine	Chafic Karam, MD
Movement Disorders	Andres DeikAcostaMadiado, MD, MSc Pavan A. Vaswani MD, Ph.D. – Assistant PD
Neurocritical Care	Danielle Sandsmark, MD, PhD
Headache	Seniha Ozudogru, MD Matthew Michaels, DO – Assistant PD
Cerebrovascular Disease (StrokeNet)	Scott Kasner, MD, MSCE

## NEUROLOGY TRANSLATIONAL CENTERS OF EXCELLENCE

<b>Precision Neuroscience</b>  Alice Chen-Plotkin, MD	<a href="#"><u>Penn Neurogenetics Therapy Center (PNTC)</u></a>  Steve Scherer, MD	<a href="#"><u>Penn Comprehensive ALS Center</u></a>  Lauren Elman, MD
<a href="#"><u>Penn Center for Neuroaesthetics</u></a>  Anjan Chatterjee, MD, PhD	<a href="#"><u>Center for Neuroinflammation and Experimental Therapeutics</u></a>  Amit Bar-Or, MD	<a href="#"><u>Brain Science Center</u></a>  John A. Detre, MD
<a href="#"><u>Neuronal Mechanisms for Auditory Learning</u></a>  Maria Geffen, MD	Clinical Traumatic Brain Injury Research Program  Ramon Diaz-Arrastia, MD, PhD	<a href="#"><u>Neuroengineering/Center for Neuroengineering and Therapeutics (CNT)</u></a>  Brian Litt, M.D
<a href="#"><u>Penn Center for Neuro-Cardio Protection (PCNC)</u></a>  Steven Messé, MD	<a href="#"><u>Neuroimmunology Autoantibody Program</u></a>  Eric Lancaster, MD, PhD Joseph Dalmau, MD, PhD	Neuroepidemiology, Health Care Outcomes and Disparities  Nabila Dahodwala, MD, MS Allison W. Willis, MD, MS
<a href="#"><u>Penn Memory Center</u></a>  David Wolk, MD	<a href="#"><u>Brain Stim Center</u></a>  Roy Hamilton, MD	



## Department of Neurology Leadership with admin contacts

<p>Frances E. Jensen, MD, FACP  <a href="mailto:Frances.jensen@pennmedicine.upenn.edu">Frances.jensen@pennmedicine.upenn.edu</a>  Sonja Ogden  <a href="mailto:Sonja.ogden@pennmedicine.upenn.edu">Sonja.ogden@pennmedicine.upenn.edu</a>  215-662-3360/3389 or 215-667-7399</p>	<p>Professor and Chair Department of Neurology</p>	<p>Hospital of Pennsylvania, 3400 Spruce St 19104  3 Dulles  Office Phone: 215-662-3360  Fax: 215-662-3362</p>
<p>Scott Kasner, MD  <a href="mailto:scott.kasner@pennmedicine.upenn.edu">scott.kasner@pennmedicine.upenn.edu</a>    asst: Kimberly Sears  <a href="mailto:Kimberly.sears@pennmedicine.upenn.edu">Kimberly.sears@pennmedicine.upenn.edu</a>  215-662-3564</p>	<p>Vice Chair Clinical Affairs  Stroke/Vascular Division Chief</p>	<p>Hospital of Pennsylvania, 3400 Spruce St 19104  Founders 9  Office Phone: 215-662-3564</p>
<p>Amy Pruitt, MD  <a href="mailto:pruitt@pennmedicine.upenn.edu">pruitt@pennmedicine.upenn.edu</a>    asst: Marilyn Ramos  <a href="mailto:Marilyn.ramos@pennmedicine.upenn.edu">Marilyn.ramos@pennmedicine.upenn.edu</a>  215-662-2796</p>	<p>Vice Chair Education  General Neurology Division Chief</p>	<p>Hospital of Pennsylvania, 3400 Spruce St 19104  3 W. Gates  Office Phone: 215-662-2796</p>
<p>Geoffrey Aguirre, MD  <a href="mailto:Geoffrey.Aguirre@pennmedicine.upenn.edu">Geoffrey.Aguirre@pennmedicine.upenn.edu</a>  Or <a href="mailto:aguirreg@upenn.edu">aguirreg@upenn.edu</a>    asst:</p>	<p>Vice Chair Research    Associate Director, Residency Program</p>	<p>Goddard Laboratories, Room 518  University of Pennsylvania  3710 Hamilton Walk  Philadelphia, PA 19104  Office: 215-573-7065</p>

		Office: 215-662-3390
<p>Josh Levine, MD  <a href="mailto:jlevine@pennmedicine.upenn.edu">jlevine@pennmedicine.upenn.edu</a> or  <a href="mailto:Joshua.levine@pennmedicine.upenn.edu">Joshua.levine@pennmedicine.upenn.edu</a></p> <p>asst: Kimberly Sears  <a href="mailto:Kimberly.sears@pennmedicine.upenn.edu">Kimberly.sears@pennmedicine.upenn.edu</a>  215-662-3368</p>	<p>Vice Chair Operations</p> <p>Neurocritical Care Division Chief</p>	<p>Hospital of Pennsylvania, 3400 Spruce St 19104</p> <p>3 W. Gates</p> <p>Office Phone: 215-662-3368</p>
<p>Monisha Kumar, MD  <a href="mailto:Monisha.Kumar@pennmedicine.upenn.edu">Monisha.Kumar@pennmedicine.upenn.edu</a></p> <p>asst: Kimberly Sears  <a href="mailto:Kimberly.sears@pennmedicine.upenn.edu">Kimberly.sears@pennmedicine.upenn.edu</a>  215-662-3368</p>	Vice Chair Quality/Improvement	<p>Hospital of Pennsylvania, 3400 Spruce St 19104</p> <p>3 W. Gates</p> <p>Office: 215-662-3396</p>
<p>Nabila Dahodwala, MD, MS  <a href="mailto:kolsond@pennmedicine.upenn.edu">kolsond@pennmedicine.upenn.edu</a></p> <p>asst: Ivone Santos  <a href="mailto:Ivone.santos@pennmedicine.upenn.edu">Ivone.santos@pennmedicine.upenn.edu</a>  610-324-9143</p>	<p>Vice Chair Faculty Development/Affairs</p> <p>Vice Chair Inclusion/Diversity</p>	<p>Pennsylvania Hospital  Depart. of Neurology, 330 S. 9<sup>th</sup> Street,  Phila, PA 19107</p>
David Do, MD	Assistant Chief Medical Information Officer for Data and Analytics	<p>Hospital of Pennsylvania, 3400 Spruce St 19104</p> <p>3 West Gates</p>



<b>Grant Liu, MD</b> <a href="mailto:gliu@pennmedicine.upenn.edu">gliu@pennmedicine.upenn.edu</a>	<b>Vice Chair Finance</b>  <b>Neuro-Ophthalmology Division Chief</b>	<b>Hospital of Pennsylvania, 3400 Spruce St 19104</b>  <b>3 Dulles</b>
<b>Matt Stern, MD</b> <a href="mailto:matthew.stern@pennmedicine.upenn.edu">matthew.stern@pennmedicine.upenn.edu</a>	<b>Vice Chair Development</b>	
<b>Saurabh Sinha, MD</b> <a href="mailto:saurabh.r.sinha@pennmedicine.upenn.edu">saurabh.r.sinha@pennmedicine.upenn.edu</a>	<b>Vice Chair Neurodiagnostics</b>	<b>Hospital of Pennsylvania, 3400 Spruce St 19104</b>  <b>3 West Gates</b>
<b>Seth Haplea, MD</b> <a href="mailto:seth.hapleadr@pennmedicine.upenn.edu">seth.hapleadr@pennmedicine.upenn.edu</a>	<b>PSP Regional Director</b>	
<b>Steven Scherer, MD, PhD</b> <a href="mailto:sscherer@pennmedicine.upenn.edu">sscherer@pennmedicine.upenn.edu</a>	<b>Ad Hoc Member of Executive Board</b>	
<b>Ray Price, MD</b> <a href="mailto:raymond.price@pennmedicine.upenn.edu">raymond.price@pennmedicine.upenn.edu</a>  <b>asst: Karen Conroy</b> <a href="mailto:Karen.conroy@pennmedicine.upenn.edu">Karen.conroy@pennmedicine.upenn.edu</a>  <b>215-662-6551</b>	<b>Neurohospitalist Division Chief</b>  <b>Site Chief: Pennsylvania Hospital</b>  <b>Co-Director, Residency Program</b>	<b>Pennsylvania Hospital</b> <b>Depart. of Neurology, 330 S. 9<sup>th</sup> Street,</b> <b>Phila, PA 19107</b>  <b>Office: 215-829-6500</b>
<b>Sashank Prasad, MD</b> <a href="mailto:sashank.prasad@pennmedicine.upenn.edu">sashank.prasad@pennmedicine.upenn.edu</a>  <b>asst: Sherri Archer</b> <a href="mailto:Sherri.archer@pennmedicine.upenn.edu">Sherri.archer@pennmedicine.upenn.edu</a>	<b>Site Chief: Presbyterian Hospital</b>	<b>Presbyterian Medical Center</b> <b>3951 N. 39<sup>th</sup> Street</b> <b>Medical Office Building,</b> <b>Suite #305</b> <b>Philadelphia, PA 19104</b>

215-349-8460		Office Phone: 215-662-8570 Cell: 445-272-9412
Allison Willis, MD <a href="mailto:Allison.Willis2@pennmedicine.upenn.edu">Allison.Willis2@pennmedicine.upenn.edu</a>	Site Chief: VA Hospital	Pennsylvania Hospital Depart. of Neurology, 330 S. 9 <sup>th</sup> Street, Phila, PA 19107 Office Phone: 215-829-6500
Brenda Banwell, MD <a href="mailto:banwellb@chop.edu">banwellb@chop.edu</a>  asst: Lana Blanco <a href="mailto:blanco1@chop.edu">blanco1@chop.edu</a> 215-590-1710	Site Chief: CHOP  Pediatric Neurology Chop Division Chief	Children's Hospital of Philadelphia 3501 Civic Center Blvd. 10 <sup>th</sup> Floor Colket Building Philadelphia, PA 19104 Office Phone: 215-590-1710
David Wolk, MD <a href="mailto:David.Wolk@pennmedicine.upenn.edu">David.Wolk@pennmedicine.upenn.edu</a>	Cognitive Division Chief	3400 Civic Center Boulevard South Pavilion, 2nd Floor Philadelphia, PA 19104  Office Phone: 215-662-7810
Chafic Karam, MD <a href="mailto:chafic.karam@pennmedicine.upenn.edu">chafic.karam@pennmedicine.upenn.edu</a>	Neuromuscular Disorders Division Chief	Hospital of Pennsylvania, 3400 Spruce St 19104 3 W. Gates
Kathryn Davis, M.D., M.S.T.R. Email: <a href="mailto:Kate.Davis@pennmedicine.upenn.edu">Kate.Davis@pennmedicine.upenn.edu</a> Website: <a href="https://davislab.med.upenn.edu/">https://davislab.med.upenn.edu/</a>	Epilepsy Division Chief	Hospital of Pennsylvania, 3400 Spruce St 19104 3 W. Gates Office Phone: 215-349-5166

<p>(clinical assistant) Rasaida Gonzalez</p> <p><a href="mailto:rasaida.gonzalez@pennmedicine.upenn.edu">rasaida.gonzalez@pennmedicine.upenn.edu</a></p>		
<p>David Raizen, MD, PhD</p> <p><a href="mailto:raizen@pennmedicine.upenn.edu">raizen@pennmedicine.upenn.edu</a></p>	Sleep Neurology Division Chief	Hospital of Pennsylvania, 3400 Spruce St 19104
<p>Andrew Siderowf, MD</p> <p><a href="mailto:siderowf@pennmedicine.upenn.edu">siderowf@pennmedicine.upenn.edu</a></p> <p>asst: Irene Skirsky</p> <p><a href="mailto:Irene.Skirsky@pennmedicine.upenn.edu">Irene.Skirsky@pennmedicine.upenn.edu</a></p> <p>215-829-6606</p>	Movement Disorders Division Chief	<p>Pennsylvania Hospital Depart. of Neurology, 330 S. 9<sup>th</sup> Street, Phila, PA 19107</p> <p>Office Phone: 215-829-8407</p>
<p>Amit Bar-Or, MD, FRCP, FAAN, FANA</p> <p><a href="mailto:baror@pennmedicine.upenn.edu">baror@pennmedicine.upenn.edu</a></p> <p>Clinical Assistant: Gail Rogers</p> <p><a href="mailto:Gail.Rogers@pennmedicine.upenn.edu">Gail.Rogers@pennmedicine.upenn.edu</a></p>	Multiple Sclerosis and Related Disorders Division Chief	<p>Perelman Center for Advanced Medicine, 3400 Civic Center Blvd. South Pavilion</p> <p>Office Phone: 215-349-8304/267-591-0136</p>
<p>Dawn Hamilton-Mechanic, PhD, ABPP-CN</p> <p><a href="mailto:dawn.mechanic@pennmedicine.upenn.edu">dawn.mechanic@pennmedicine.upenn.edu</a></p>	Neuropsychology Division Chief	Perelman Center for Advanced Medicine, 3400 Civic Center Blvd. South Pavilion
<p>Seniha Ozudogru, MD</p> <p><a href="mailto:seniha.ozudogru@pennmedicine.upenn.edu">seniha.ozudogru@pennmedicine.upenn.edu</a></p>	Headache Division Chief	<p>Hospital of Pennsylvania, 3400 Spruce St 19104</p> <p>3 Dulles</p>



<b>Richard Phillips, MD, PhD</b> <a href="mailto:richard.phillips@pennmedicine.upenn.edu">richard.phillips@pennmedicine.upenn.edu</a>	<b>Neuro-Oncology Division Chief</b>	
<b>Laura Stein, MD MEd</b> <a href="mailto:Laura.Stein@pennmedicine.upenn.edu">Laura.Stein@pennmedicine.upenn.edu</a>  <b>asst: Rosie Friedenber</b> <b>215-662-6551</b>	<b>Co-Director, Residency Program</b>	<b>Hospital of Pennsylvania, 3400 Spruce St 19104</b>  <b>3 W. Gates</b> <b>Office Phone: 215-662-2551</b>
<b>Kelley Humbert, MD</b>  <a href="mailto:Kelley.Humbert@pennmedicine.upenn.edu">Kelley.Humbert@pennmedicine.upenn.edu</a>	<b>Associate Director, Residency Program</b>	<b>Hospital of Pennsylvania, 3400 Spruce St 19104</b>  <b>3 W. Gates</b> <b>Office Phone: 215-662-3606</b>
<b>Rohini Samudralwar, MD</b> <a href="mailto:rohini.samudralwar@pennmedicine.upenn.edu">rohini.samudralwar@pennmedicine.upenn.edu</a>	<b>Associate Director, Residency Program</b>	<b>Hospital of Pennsylvania, 3400 Spruce St 19104</b>  <b>3 W. Gates</b> <b>Office Phone: 215-662-3606</b>
<b>Denise Xu, MD</b> <a href="mailto:denise.xu@pennmedicine.upenn.edu">denise.xu@pennmedicine.upenn.edu</a>	<b>Associate Director, Residency Program</b>	<b>Hospital of Pennsylvania, 3400 Spruce St 19104</b>  <b>3 W. Gates</b> <b>Office Phone: 215-662-3606</b>

Name	Title
<b>INTERNAL CONTACTS</b>	
<b>Elyse Iannucci</b> <a href="mailto:elyse.iannucci@pennmedicine.upenn.edu">elyse.iannucci@pennmedicine.upenn.edu</a>  <b>Assistant: Jill Bautista</b> <b>Jill.bautista@pennmedicine.upenn.edu</b>	<b>Chief Operating Officer</b>
<b>Rachel DeAngelis</b> <a href="mailto:Rachel.DeAngelis@pennmedicine.upenn.edu">Rachel.DeAngelis@pennmedicine.upenn.edu</a> <b>215-573-6261</b>	<b>Director, Academic Business Operations</b>
<b>Nicole Veale</b> <b>nicole.veale@pennmedicine.upenn.edu</b>	<b>Director of Operations</b>
<b>Heather Craig</b> <b>heather.craig@pennmedicine.upenn.edu</b>	<b>Director of Finance</b>
<b>Natalie Marciano</b> <a href="mailto:Natalie.Marciano@Pennmedicine.upenn.edu">Natalie.Marciano@Pennmedicine.upenn.edu</a> <b>215-662-3985</b>	<b>Director of Academic Affairs and Education</b>
<b>Kristin McCabe</b> <a href="mailto:Kristin.McCabe@pennmedicine.upenn.edu">Kristin.McCabe@pennmedicine.upenn.edu</a> <b>215-360-0739</b>	<b>Director of Clinical Operations</b>
<b>Sonja Ogden</b> <a href="mailto:Sonja.ogden@pennmedicine.upenn.edu">Sonja.ogden@pennmedicine.upenn.edu</a> <b>215-662-3360</b>	<b>Executive Assistant and Academic Administration Manager</b>
<b>Chrissy Hunsberger-Smith</b> <a href="mailto:Chrissy.Hunsberger-Smith@pennmedicine.upenn.edu">Chrissy.Hunsberger-Smith@pennmedicine.upenn.edu</a> <b>215-746-2510</b>	<b>Operations &amp; Finance Manager (Assets, Space Planning, Effort Reporting, Payroll Reallocations)</b>

Stephanie Kotloff Stephanie Oberlin Casey Corman	Grants Manager
Jill Agolino  Pre Award	Associate Director, ORSS
Kelly McCafferty <a href="mailto:kelly.mccafferty1@pennmedicine.upenn.edu">kelly.mccafferty1@pennmedicine.upenn.edu</a>  Catherine Killian catherine.killian@pennmedicine.upenn.edu	Pre Award Grants Coordinator, ORSS
Blake Jones <a href="mailto:Blake.Jones@Pennmedicine.upenn.edu">Blake.Jones@Pennmedicine.upenn.edu</a> 215-573-4287 - Grant financial reports, Procard admin, Effort reporting	Financial Coordinator
Sumit Bardhan <a href="mailto:Sumit.Bardhan@Pennmedicine.upenn.edu">Sumit.Bardhan@Pennmedicine.upenn.edu</a> - Purchasing, Concur, eShip	Financial Administrative Coordinator
Shane Hall <a href="mailto:halsha@pennmedicine.upenn.edu">halsha@pennmedicine.upenn.edu</a> 215-662-4067	Finance Manager
Walter Thompson <a href="mailto:thompsw@pennmedicine.upenn.edu">thompsw@pennmedicine.upenn.edu</a>	Accountant/Business Office
Juan Nicdao <a href="mailto:Juan.Nicdao@Pennmedicine.upenn.edu">Juan.Nicdao@Pennmedicine.upenn.edu</a> 215-614-1993	Financial Assistant
Naseem Kerr <a href="mailto:nkerr@pennmedicine.upenn.edu">nkerr@pennmedicine.upenn.edu</a>	Director, Clinical Research Operations



Douglas Steiner <a href="mailto:dsteine@pennmedicine.upenn.edu">dsteine@pennmedicine.upenn.edu</a>	Associate Director, Research Operations
Theresa Tritto, PhD <a href="mailto:ttritto@pennmedicine.upenn.edu">ttritto@pennmedicine.upenn.edu</a> <a href="tel:215-662-3544">215-662-3544</a> <a href="tel:267-586-3566">267-586-3566</a>	Scientific Program Director, Penn Translational Neuroscience Center
Karen Conroy <a href="mailto:karen.conroy@pennmedicine.upenn.edu">karen.conroy@pennmedicine.upenn.edu</a> 215-662-6551	Associate Practice Manager, HUP
Natysha Jacobs <a href="mailto:natysha.jacobs@pennmedicine.upenn.edu">natysha.jacobs@pennmedicine.upenn.edu</a>	Senior Practice Manager, PMUC/HUP
Rebecca Hyde <a href="mailto:rebecca.hyde@pennmedicine.upenn.edu">rebecca.hyde@pennmedicine.upenn.edu</a>	Faculty Affairs Coordinator
Hannah Childs <a href="mailto:Hannah.childs@pennmedicine.upenn.edu">Hannah.childs@pennmedicine.upenn.edu</a>	Credentialing and Compliance Coordinator
Mel DeLozier <a href="mailto:Mel.Delozier@Pennmedicine.upenn.edu">Mel.Delozier@Pennmedicine.upenn.edu</a> 215-349-5161 215-662-3784  - Job Postings, Reclasses, Visa Coordination, Postdoc Appointments	Staffing and International Affairs Specialist
Vanna Hing <a href="mailto:Vanna.hing@pennmedicine.upenn.edu">Vanna.hing@pennmedicine.upenn.edu</a> 215-662-3370	Residency Coordinator
Rachel Mroz <a href="mailto:Rachel.mroz@pennmedicine.upenn.edu">Rachel.mroz@pennmedicine.upenn.edu</a>	Education Coordinator
Juliana Adedipe <a href="mailto:Juliana.adedipe@pennmedicine.upenn.edu">Juliana.adedipe@pennmedicine.upenn.edu</a> 215-614-0349	Fellowship Program Coordinator

Janice Gallo <a href="mailto:Janice.gallo@pennmedicine.upenn.edu">Janice.gallo@pennmedicine.upenn.edu</a> 215-349-5310	Manager Revenue Cycle
Eileen French, PhD, RN eileen.french@pennmedicine.upenn.edu 215-600-5831 215-360-0739	Nurse Manager, Division of MS and Related Disorders
EXTERNAL CONTACTS	
Lindsey Walker <a href="mailto:lindsw@upenn.edu">lindsw@upenn.edu</a> 215-898-3037	Development Officer
Anna Horn <a href="mailto:anna.horn@pennmedicine.upenn.edu">anna.horn@pennmedicine.upenn.edu</a>	Marketing Officer
Kelsey Geesler <a href="mailto:Kelsey.Geesler@pennmedicine.upenn.edu">Kelsey.Geesler@pennmedicine.upenn.edu</a> 215-300-1194 - Cell	Public Relations Officer

**Other Faculty, Staff and Department members NOT LISTED  
can be found at either of the following sites via the directory:**

**UPHS phonebook <http://uphsxnet.uphs.upenn.edu/home/>**

**Penn Directory**

**<https://www.med.upenn.edu/psom/directory.html>**

**NOTE:**

**The above sites are pennkey protected and not accessible to  
the general public**

## NEUROLOGY DEPARTMENT MONTHLY MEETING SCHEDULE

<b>Research Meeting</b> <b>Meeting Hosts:</b> Goeffrey Aguire and Naseem Kerr <b>Meeting Location:</b> virtual <b>Date:</b> first Thursday of every month <b>Time:</b> Noon to 1:00	<b>Faculty Meeting</b> <b>Meeting Host:</b> Frances E. Jensen, MD, FACP  <b>Meeting Location:</b> virtual <b>Date:</b> second Thursday of every month <b>Time:</b> Noon to 1:00
<b>Division Chiefs Meeting</b> <b>Meeting Host:</b> Elyse Iannucci, MBA  <b>Meeting Location:</b> virtual <b>Date:</b> third Thursday of every month <b>Time:</b> Noon to 1:00	<b>Inclusion and Diversity Steering Committee Meeting</b> <b>Meeting Host:</b> TBD <b>By invitation, By SubCommittee</b> <b>Meeting Location:</b> virtual
<b>Wellness Steering Committee Meeting</b> <b>Meeting Host:</b> Danielle Sandsmark, MD, PhD, Jennifer Orthmann-Murphy, MD, PhD <b>Meeting varies and by invitation</b> <b>Meeting Location:</b> virtual	<b>DCOAP Meeting</b> <b>Meeting Host:</b> Dennis Kolson, MD, PhD <b>Committee Meeting varies</b> <b>Meeting Location:</b> virtual
<b>Clinical Research Operations Meeting</b> <b>Meeting Host:</b> Naseem Kerr <b>Meeting Location:</b> virtual <b>Date:</b> third Wednesday of every month <b>Time:</b> 3:00pm	<b>Weekly Wednesday Education Lectures</b> <b>M&amp;M Lecture</b> – (first Wednesday) of each month at 12pm <b>Grand Rounds Lecture</b> – (the second, third & fourth Wednesday) of each month at 12pm <b>Neuropathology Lecture</b> – (every first and third Friday) of each month at 8am and 12pm



## Key Neurology Meetings and Seminars/Lectures

Upon appointment, you will be added to a number of email and alias lists. Please note the following events, and feel free to contact the staff below to confirm that you are receiving relevant emails. Contact below for information

[Jill.bautista@pennmedicine.upenn.edu](mailto:Jill.bautista@pennmedicine.upenn.edu)

[Vanna.Hing@pennmedicine.upenn.edu](mailto:Vanna.Hing@pennmedicine.upenn.edu)



## Departmental Faculty and Staff Governance Committees

### *EXECUTIVE COMMITTEE*

The Committee meets monthly following our department finance committee meeting. All vice chairs are present to discuss relevant topics related to finance, operations, recruitment and research. The chair of the department leads all discussions. Relevant health system governance topics are often addressed.

### *FINANCE COMMITTEE*

The Finance Committee oversees the profit and loss analyses of departmental programs and individual faculty and care providers. The Chair and the Executive Committee refer to the Finance Committee to provide paths to resolve variances and adjudicate disparities in compensation or other funding issues for department operations and programs.

### *DIVISION CHIEF COMMITTEE*

Committee covers operational, financial and administrative topics each month. Representatives from each of the department divisions participate. Current operational topics are addressed and through the direction of COO and DOO of the department, updates and follow up tasks are announced. Monthly financials are reviewed by the DOF. Current financial topics are presented, with engagement from the vice chair of finance. The chair of the department is present, overseeing all agenda items.

### *DEPARTMENTAL COMMITTEE ON APPOINTMENTS AND PROMOTIONS (DCOAP)*

Committee meets monthly to review appointments, reappointments, and promotions in the department. Discussion is led by the Chair of the committee. With the objective of recruiting and retaining distinguished faculty, the committee is a resource providing faculty review and support during the processes of appointment, reappointment, and promotion. Approved recommendations of the committee are subject to subsequent review at the School and University levels.

## RESEARCH COMMITTEE

The Research Committee collaborates to review innovative and research based projects that will bring us to the forefront of science. Our faculty benefits from a highly collaborative environment that consists of inter-disciplinary programs. The Committee looks for opportunities for innovations and research funding and this has grown by about 20% over the past 6 years. Through research, we can continue to protect and support the academic effort and mission.

## EDUCATION COMMITTEE

The Education Committee was developed to support and oversee the teaching mission of the department and university as a whole. Education Policy development, new training programs and strategic initiatives are the primary goals that the committee is responsible for overseeing. The committee also factors in goals to increase onboarding of residents into the program and to help with the retention within the program itself, by creative attractive. It consistently strives to remain one of the top educational hospital settings and continues to be competitive in the field with recruitment of candidates. This committee is responsible for creating new programs in subspecialty neurology, special programs and other certificate programs for residents.

## INCLUSION, DIVERSITY, ANTIRACISM AND EQUITY COMMITTEE (IDARE)

The purpose of the Diversity and Inclusion Committee is to follow through on this commitment by promoting a departmental culture in which faculty and trainees from the broadest possible range of backgrounds and life experiences can thrive professionally and meet the clinical needs of an increasingly diverse patient population. In order to achieve these objectives, the committee will pursue three principal strategies. The first of these is to enhance the diversity of neurology faculty and trainees. To that end, the committee will emphasize the importance of diversity as consideration in new faculty searches, faculty development and retention efforts, and the recruitment of talented residents and fellows. Secondly, the committee will increase faculty and trainee awareness of disparities as they pertain to neurological care. Finally, the departmental diversity committee will work to enhance community outreach efforts on the part of Penn Neurology by bolstering both local and global service opportunities for faculty and trainees.

Equity Education	Recruitment & Retention	Community and Social Action	Intradepartmental Equity
<b>Aim:</b> To provide education and training that ensures that all members of the department feel <b>confident and equipped to address discrimination of any sort</b> in both clinical and nonclinical contexts.	<b>Aim:</b> To ensure that Neurology seeks talent from all walks of life and retains that talent by advancing programs that enable <b>all department members</b> to thrive professionally.	<b>Aim:</b> To serve the local community by addressing social determinants of neurological health, foster increased trust in Penn Neurology among historically disadvantaged members of our local community, and to <b>normalize participation in social and community actions and advocacy</b> in the Neurology Department.	<b>Aim:</b> To <b>eliminate equity gaps</b> to create a culture of inclusion for all members of the Department of Neurology.

### ***AWARDS COMMITTEE***

The Awards Committee was formed to review and recommend award nominations for faculty and staff of neurology. These awards are important and help to recognize, promote and increase the profile of individuals in our department for their scientific accomplishments and/or other career goals and highlights. The committee is comprised of senior members of the department who recommend peers, and junior faculty members for national and international scientific organization awards as well as the Perelman School of Medicine awards. It is the goal of the Committee to promote the success of our faculty/staff and to increase their profiles throughout the university and health system, nationally and internationally.



### ***WELLNESS STEERING COMMITTEE***

The Penn Neurology Department Wellness Steering Committee began in March 2020 and is comprised of representatives from clinical and research faculty, advanced practice providers and staff. The mission of this committee is to support individuals in the department of neurology, by enabling personal growth and positive relations with others and promoting resilience in the face of typical and atypical circumstances, so that we may flourish in our careers.



## Neurology Residents and Fellows 2024-25

### Prelims (PGY1)

Matthew G. Boden, MD  
Zoya Gurm, MD  
Lauren Herzog, MD (Pennsy)  
Genna R. Ianni, MD, PhD  
Abigail C. Knowles, MD (Pennsy)  
Emily K. Marshall, MD (Pennsy)  
Maria D. Melendez, MD  
Danya J. Nees, DO  
Maria M. Priyma, MD  
Maya Ramy, MD, MD  
William H. Roberts, MD (Pennsy)  
Esteban E. Paredes Stanley, MD  
Shriya Suresh, MD  
Kyle G. Wicker Jr, MD

### JAR: 1<sup>st</sup> Year Residents (PGY 2-3)

John T. Cook, MD  
Dominique D. Cooper, MD (Child Neurology)  
Jonathan (Vivian) Dickens, MD, PhD  
Tochi P. Eboh, MD  
Nicholas J. Fioravante, MD  
Joseph R. Geraghty, MD, PhD  
Asma Akbar Ladak, MBBS, MPH  
Leah B. Loerinc, MD, MPH (Child Neurology)  
Janine Lemos Melo Lobo Jofili Lopes, MD  
Naomi Mayman, MD  
Harrison M. McAdams, MD, PhD (Child Neurology)  
Yoon Ji Moon, MD (Child Neurology)  
Ozichi C. Osuoha, MD  
Tanya F. Panwala, MD  
Hanna E. G. Retallack, MD, PhD (Child Neurology)  
Rebecca E. Row, MD  
Shannon C. Shipley, MD (Child Neurology)  
Elsa Salim Karam, MD  
Anne T. Taylor, MD  
Aaron M. Williams, MD, PhD

### SAR: 2<sup>nd</sup> Year Residents (PGY 3-4)

Samuel Belfer, MD, PhD (Child Neurology)  
Brittany Charsar, MD, PhD (Child Neurology)  
Alex Chen, M.D.  
Vivian Chioma, MD, PhD  
Anthony Cordisco, MD  
Eli Cornblath, MD, PhD  
Kirsten Craddock, MD (Child Neurology)  
Lydia Denison, MD  
Swetha Dravida, MD, PhD (Child Neurology)  
Robert Eisinger, MD, PhD  
Yombe Fonkeu, MD  
Alec Gibson, MD, PhD  
Brian LaGrant, MD (Child Neurology)  
Theandra Madu, MD  
Laura Miyares-Hernandez, MD (Child Neurology)  
Noelle Ohanesian, MD  
Jonathan Perkins, MD  
Elizabeth (Libby) Polott, MD (Child Neurology)  
Sabine Schneider, MD, PhD  
Noor Shaik, MD, PhD  
Brendan Zotter, MD, PhD

### SSAR: 3<sup>rd</sup> Year Residents (PGY 4-5)

Lindsay J. Agostinelli, MD, PhD  
Ashley Bach, MD, MPH (Child Neurology)  
Christina M. Boada, MD, MS  
Gina Chang, MD, MPH (Child Neurology)  
Holly C. Elser, MD, MPH, PhD  
Michelle Han, MD (Child Neurology)  
Charmaine Jenkins, MD (Child Neurology)  
Riley Kessler, MD (Child Neurology)  
Caroline F. Kruse, MD  
Jessica N. Little, MD, PhD  
Rogan G. Magee, MD, PhD  
Kelly Markwalter, MD, PhD (Child Neurology)  
Humberto Mestre Payne, MD, PhD  
Jenna L. Miller, MD  
Andrew A. Morrison, MD  
Michael A. Perez, MD  
Thomas Pisano, MD, PhD  
Linda B. Xu, MD  
Wajiha Yousuf, MD  
Sonya E. Zhou, MD, MPH

### Clinical Fellows

Olajide Abiola, MD – Neurocritical Care (2<sup>nd</sup> year)  
Michael Allen, MD – Epilepsy  
Sara Berman, MD, PhD – Movement Disorders  
Bianca Cavedoni Urbano, MD – Cognitive & Behavioral Neurology  
Amy Durand, MD, Neuro-Ophthalmology  
Samuel Durojaye, MD – Neurocritical Care (2<sup>nd</sup> year)  
Brian Emmert Jr., MD – Epilepsy (2<sup>nd</sup> year)  
Moiria Flanagan, MD – Neurocritical Care (2<sup>nd</sup> year)  
Julian Gal, MD – Epilepsy  
Rebecca Hsu, MD – Neuromuscular Medicine  
Lamya Ibrahim, MBBS – Vascular Neurology  
Esteban Luna, MD, PhD – Movement Disorders  
Carly Marshall, MD – Movement Disorders (2<sup>nd</sup> year)  
Jorge Matta, MD – Neurocritical Care  
Yohannes Mulatu, MD – Vascular Neurology  
Laura Naydovich, MD – Multiple Sclerosis  
Thu Nguyen, DO, PharmD – Neurocritical Care  
Rebecca Oksenhendler, MD – Vascular Neurology  
Ogo-Oluwa Onifade, MD – Headache and Facial Pain  
Laura Pappalardo, MD, PhD, PharmD – Neurocritical Care  
Kevin Porras, MD – Neurocritical Care (2<sup>nd</sup> year)  
Leigh Rettenmaier, MD – Neuro-Ophthalmology  
Arup Sarma, MD, PhD – Neurocritical Care (2<sup>nd</sup> year)  
Amanda Simon, MD – Epilepsy  
Madeline Stecy, MD – Epilepsy  
Eric Stulberg, MD, MPH – Vascular Neurology  
Megan Super, MD – Movement Disorders  
Simon Thebault, MBBS – Multiple Sclerosis  
Rachel Thomas, MD, PhD – Neurocritical Care (2<sup>nd</sup> year)  
Joaquin Vizcarra Pasapera, MD – Movement Disorders (2<sup>nd</sup> year)  
Sarah Woodson Smith, MD – Epilepsy (2<sup>nd</sup> year)  
Aaron Zelikovich, MD – Neuromuscular Medicine  
Jiping Zhou, MD, MPH – Neurocritical Care

### CHOP Clinical Fellows

Patrick Davis, MD, PhD – Pediatric Epilepsy  
Whitney Fitts, MD – Pediatric Epilepsy  
Carley Gilman, MD – Pediatric Epilepsy (Research)  
Dennis Keselman, MD – Pediatric Neuromuscular  
Allison Marshall, MD, MSc – Pediatric Headache  
Laura McGarry, MD, PhD – Pediatric Epilepsy/Genetics (ENGIN)  
Amytice Mirchi, MD – Pediatric MS  
Maya Silver, MD – Pediatric Neurocritical Care  
Gazelle Zerafati-Jahromi, MD – Pediatric Epilepsy

**Residency Contact:**

**Vanna Hing – Residency Coordinator**

[Vanna.Hing@pennmedicine.upenn.edu](mailto:Vanna.Hing@pennmedicine.upenn.edu)

**Residency Leadership**

**Laura Stein, MD, MD**

**Geoff Aguirre, MD, PhD**

**Ray Price, MD**

**Kelley Humbert, MD**

**Denise Xu, MD**

**Rohini Samudralwar, MD**

**Fellowship Contact:**

**Juliana Adedipe – Fellowship Coordinator**

[AdedipeJ@pennmedicine.upenn.edu](mailto:AdedipeJ@pennmedicine.upenn.edu)

**Email** [PennNeuroFellowships@uphs.upenn.edu](mailto:PennNeuroFellowships@uphs.upenn.edu)

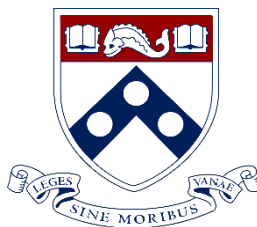
**Website:** <https://neurofellowships.uphs.upenn.edu/p/overview-of-program-neurology.html>



THIS SECTION WILL CONTAIN INFORMATION AVAILABLE WITHIN THE UNIVERSITY AND HEALTH SYSTEM LEVELS. LINKS TO WEBSITES HAVE BEEN PROVIDED AND IN SOME CASES PHONE #'S BUT THIS INFORMATION IS SUBJECT TO CHANGE. PLEASE FEEL FREE TO SHARE ANY NEW INFORMATION THAT YOU LEARN OF IN AN EFFORT TO KEEP THIS DOCUMENT CURRENT & UP TO DATE.

**IMPORTANT:** INFORMATION AND BENEFITS DIFFER BETWEEN UNIVERSITY AND HEALTH SYSTEM – BE SURE THAT YOU HAVE THE CORRECT DETAILS

Penn Medicine Integration: You are able to have users from both UPHS and The University collaborate on the same team. If your primary email address is [user@upenn.edu](mailto:user@upenn.edu), then colleagues with a [user@pennmedicine.upenn.edu](mailto:user@pennmedicine.upenn.edu) email address are guests for you. The opposite would apply if your primary email address is [user@pennmedicine.upenn.edu](mailto:user@pennmedicine.upenn.edu). The “guest” user you invite to your team will have to toggle to their guest account to see that team.



## For Penn Medicine employees

### [Onboarding at Penn Medicine - Home](#)

Being a new employee can certainly be challenging, so partner with your manager to identify your initial assignments and what to expect in the days to come

- Clarify your first week's schedule and confirm required and recommended training.
- Review your job description, outline of duties and expectations, through the department orientation checklist.
- Review hours of work.
- Ask questions about policies and procedures for accruing vacation, personal, and sick time.
- Ask any additional questions you might have about your new position.
- Get acquainted with your new workspace; you will come to find that no two workspaces are alike!
- Tour your department, floor, unit, or entity.
- Meet your new colleagues!
- Confirm you have the required access into your building, if necessary.

### ACCESS SYSTEMS, TECHNOLOGY AND ADDITIONAL RESOURCES

- Log onto [Employee Records and Paychecks portal](#) to update your tax withholding (W4) status.
- Talk with your manager about setting devices that are applicable to your new role. If you have trouble, call the Service Desk at 215-662-7474 or visit [the Information Services Website](#).
  1. Desk phone
  2. Mobile phone, if necessary
  3. Desktop computer or laptop
  4. Email account (network login credentials come from manager)
- Obtain your Penn Medicine ID Badge, if you did not already receive at New Employee Orientation.
- Set up your PennKey. For information about set up or FAQs, visit the [PennKey Help](#)

## FOR PSOM EMPLOYEES

[Welcome to PSOM!](#) | [Onboarding Website](#) | [Office of Organization Effectiveness](#) | [Perelman School of Medicine at the University of Pennsylvania](#)

### Building Access

- ☐ Penn ID Card: Mandatory for all UPenn faculty

Standing faculty who are currently being paid through the University of Pennsylvania payroll system are eligible to have a PennCard. Please use the following procedure to obtain your faculty PennCard:

- Make sure your Hiring Officer or Payroll Administrator has entered your complete payroll record into the Payroll/Personnel System (Personal Data, Job Data, and Payroll Distribution Information) at least one University business day prior to coming to the PennCard Center.
- Bring a valid, US government issued photo I.D. or Passport to the PennCard Center. To confirm eligibility, please call: 215-417-CARD (2273) before heading to Penn Card Center in Franklin Building – Second Floor of Penn Bookstore, 3601 Walnut Street
- URL: [www.upenn.edu/penncard](http://www.upenn.edu/penncard)

- ☐ Penn Key: name code used for access to email and my.med applications

Register for your Penn Key via the following URL after you receive Penn ID. Faculty need to be in the payroll system for 24 hours before getting your Penn Key: [www.upenn.edu/computing/pennkey](http://www.upenn.edu/computing/pennkey)

- If the faculty was previously employed at the University but does not have an active affiliation in payroll, administrator should contact MedHelp ([medhelp@pennmedicine.upenn.edu](mailto:medhelp@pennmedicine.upenn.edu)) to request a PennKey set up code.

- ☐ Email Setup

Email setup is completed after you obtain your PennKey. Apply for Penn Medicine email account through the Email Account Manager (URL below). Submit Penn Medicine Academic Computing Services (PMACS) Help Ticket to have the e-mail client established on your desktop. Please allow 24-48 hours for email account creation.

- URL: [www.med.upenn.edu/apps/my/eam](http://www.med.upenn.edu/apps/my/eam)
- Call Help Desk if problems arise: 3-4531
  - If the faculty is not a full-time employee with SOM affiliation, they cannot apply for their Penn Medicine email account through the Email Account Manager. The administrator should submit a request to the LSP(s) requesting an account for the employee and include a 26-digit budget # for the \$42/year charge and the new employee's PennKey Name.

- ☐ Directories Confirm/add contact information to the Penn Directory.

- You will need your PennKey to complete this registration.
- URL: <http://www.upenn.edu/directories/>



- Please send new/updated contact information, including office, phone, e-mail, home address/phone and emergency contact to: [Name] (Email)
- Note: The email you enter into the Penn Directory is the same email that will feed into the Faculty Appointment Data System (FADS); the system is used to create email aliases for all faculty communications. Be sure to use the email at which you prefer to receive important faculty messages (CHOP faculty in particular are encouraged to double-check your directory information).

Our PSOM New Staff Orientation Program is a combination of online and in-person events and is designed to last three weeks. It is targeted to all new full-time employees and full-time internal transfers to PSOM, but anyone at PSOM is welcome to register for the program.

The online portion of orientation will automatically be assigned to all new full-time employees and full-time internal transfers through Knowledge Link, our learning management system, as soon as your profile becomes active. The in-person networking sessions are scheduled quarterly and you will have the option to register in Knowledge Link.



## Virtual Headshot

### Provider Headshots

Taken virtually - any time, any place

The Penn Medicine Marketing department has partnered with Capturely, a mobile app photography service, to obtain professional headshots of our providers for marketing and patient engagement purposes. Only headshots taken through Capturely will be used in marketing materials to ensure consistency with brand standards and photo specifications.

[Click here to schedule your virtual headshot session](#)

[Click here for more information](#)

## Research and Lab Set Up

Welcome to the University of Pennsylvania, Perelman School of Medicine, Department of Neurology!! The aim of this guide is to streamline the process of initiating research for new investigators. We've removed the guesswork and identified the essential resources within the vast Penn network to get you started and on the road to success!



### Onboarding and initiating accounts and services

1. Are entered into the Penn System? (SEE Forms section)
2. Have you completed onboarding in the Workday system?
3. Have you received your [PennCard](#)?
4. Do you have a [PennKey](#) and password?
5. Do you have a Penn Medicine Microsoft Outlook email address?
6. Do you have ID access to your lab and perimeter of School of Medicine buildings?
7. Do you have telephone and voicemail service?

Contact [Digital Academic Resource Transformation \(DART\)](#) for the following

1. Penn Medicine email address
2. DART [username and password](#)
3. Initial setup (imaging) of computer(s) and printer(s).
4. [Submit a ticket](#) to DART help desk for support or service.

### ☐ Institutional Review Board

The IRB application is required for approval of any research utilizing human participants, regardless of risks imposed by the research. The IRB application begins with a screening process to determine whether the proposal qualifies as research and utilizes human participants. In addition, the screening form will assess whether the submission might qualify for exemption or if expedited/convened review is warranted. You can access the IRB process at: <https://irb.upenn.edu/>

### Research Core Facilities

The Perelman School of Medicine is committed to advancing the research and academic endeavors at Penn and neighboring scientific communities. Our 22 research cores offer a wide variety of services, ranging from molecular profiling to cell sorting to high resolution electron microscopy. Through these diverse resources, we provide access to state-of-the-art equipment and instrumentation, technical expertise and training and education all designed to support innovative, cutting-edge research.

For more information, visit the Biomedical Research Core facilities web site:

<https://www.med.upenn.edu/cores/>

Graduate Group Information

Placeholder for overview

Contact: Faculty director name, title, phone, email (to be updated with a point person)

Ready to start training?

Based on job [data and other](#) criteria, [Workday Learning](#) will automatically assign training required by federal and state laws and regulations, granting agencies, and University policy.

#### Setting up your lab for Research

1. Contact Penn approved supply vendors for new lab setup quotes for equipment and reagents – see [approved supplier list](#) for contact name and information.
2. [Order room signs](#).
3. Make sure your lab address is listed in the Ben Buys ordering system for deliveries (see below).
4. Determine where pieces of equipment will be placed in the lab, and assess whether or not equipment requirements are met (e.g. proper outlets, compressed gas sources, emergency outlets, data ports, RO/DI water source, and alarm systems for ultra-low temperature freezers).
5. Consider ordering essential equipment (such as biosafety cabinets) with long lead-times as soon as possible.

Prior to ordering equipment, you may want to reach out to other investigators in your department to see if the equipment you need currently exists and is shared among investigators. This may be an option if equipment is cost prohibitive or requires a maintenance contract which can be shared among users to reduce operating costs.

6. Get fume hood or [Biosafety cabinet certified](#).
7. If you are using flammable liquids or solids, make sure your lab has a flammable cabinet.
8. Order supplies, reagents, and remaining equipment.

9. Contact [EHRS](#) for initial safety inspection and [BioRaft](#) account setup for future lab inspections and compliance requirements.

#### Procuring lab supplies and setting up lab to receive deliveries

1. When completing Penn Profiler, if you identified yourself as someone who will need to make purchase requisitions, you will need to complete [Ben Financials training](#).
2. Make sure your lab address is listed in the Ben Buys ordering system for deliveries. If your lab address is not listed as a delivery site in Ben Buys, contact Purchasing Support at [PurchasingSupport@upenn.edu](mailto:PurchasingSupport@upenn.edu). Be sure to include the information below;

School/Center: MEDICINE

Room/Building:

Department Name: NEUROLOGY

Street Address:

City, State, Zip-Mailcode: PHILADELPHIA, PA 19104

3. Log into [Ben Financials](#) to place orders.

#### Core Facilities

1. Are you interested in using any of UPENN's [Biomedical Research Core Facilities](#)?
2. How do I pay for Core Facility services?

Login to the [Central Account Management System \(CAMS\)](#) to link funding for to individual members of your lab to pay for Core services.

#### Other Services

How do I setup dry ice or liquid nitrogen deliveries?

Contact: Liquid Nitrogen Facility



[LiquidNitrogenFac@penntestimony.upenn.edu](mailto:LiquidNitrogenFac@penntestimony.upenn.edu)

Ready to start doing research?

WORKING WITH ANIMALS?

Yes

Submit a protocol for proposed research to the [IACUC](#) using the [ARIES](#) system.



Complete required training

Click on the 'training' tab within your IACUC protocol to view individual training requirements.



Approval!!!

WORKING WITH HUMAN SUBJECTS?

Yes

Submit a protocol for proposed research to the [IRB](#) using the [HS-ERA](#) system.



Complete required training

Click this [link](#) for guidance on training required for recruiting and consenting human subjects.



Approval!!!

Ready to begin animal research?

After your IACUC protocol has been approved, you will need to attend a ULAR animal facility orientation where your animals will be housed, to get ID access to the facility. You can sign-up to attend a ULAR Facility tour via Knowledge Link.

## Animal Procurement

After your initial protocol review has been submitted and approved by the IACUC, you will be ready to [procure animals](#) for the designated housing vivarium listed on your protocol.

## Other Penn Resources

Explore data file storage and sharing options - [Penn + Box](#), [Secure Share](#), [Electronic Research Notebooks](#).

How do I [submit a service request](#) for facility issues?

Visit the [Cell Center](#), the University's onsite stockroom.

YOU CAN NAVIGATE TO THE U@Penn Portal and find so much or click this link:  
[https://portal.apps.upenn.edu/penn\\_portal/u@penn.php](https://portal.apps.upenn.edu/penn_portal/u@penn.php)





## Neurology Contacts



CHECKLIST ITEM	SPECIFICS	NAME/CONTACT
	<b>INTERNAL CONTACTS</b>	
Computer, devices	Ordering laptop, desktop, phone	Nicole Veale <a href="mailto:nicole.veale@pennmedicine.upenn.edu">nicole.veale@pennmedicine.upenn.edu</a>
Office	Office set-up, Furniture, cleaning, Phone, etc.	Jill Bautista <a href="mailto:Jill.bautista@pennmedicine.upenn.edu">Jill.bautista@pennmedicine.upenn.edu</a>
Medical Affairs	Licensing, privileges, credentialing,	Hannah Childs <a href="mailto:Hannah.Childs@Pennmedicine.upenn.edu">Hannah.Childs@Pennmedicine.upenn.edu</a>
Faculty Affairs	Faculty appointment, teaching workshops, provost, academic planning	Rebecca Hyde <a href="mailto:rebecca.hyde@pennmedicine.upenn.edu">rebecca.hyde@pennmedicine.upenn.edu</a>
Business Office	Human Resources issues, expenses, grant/research, travel	Chrissy Hunsberger-Smith
Supplies	All office supplies will need to go through the business office and must be a preferred vendor	Juan Nicdao <a href="mailto:Juan.nicdao@pennmedicine.upenn.edu">Juan.nicdao@pennmedicine.upenn.edu</a>
Lab Coats/white coats	Ordering, cleaning, etc.	Karen Conroy
Stationary, business cards	Templates, etc.	Karen Conroy
Epic Training		Nicole Veale
Billing - Codes		Janice Gallo 215-349-5310
Websites – clinical and research	Clinical: <a href="https://www.pennmedicine.org/for-patients-and-visitors/find-a-program-or-service/neurology">https://www.pennmedicine.org/for-patients-and-visitors/find-a-program-or-service/neurology</a>  Research/academic: <a href="https://www.med.upenn.edu/neurology/">https://www.med.upenn.edu/neurology/</a>	Sonja Ogden Chrissy Hunsberger-Smith
Marketing/Communications/Public Relations – Media related Interviews	Online profiles, clinical website, newsletter, physician announcements, branding campaign, and other things marketing in nature	Our contacts:  Marketing contacts: Anna Horn <a href="mailto:anna.horn@pennmedicine.upenn.edu">anna.horn@pennmedicine.upenn.edu</a>

		<p>Public Relations and Communications contact:</p> <p>Kelsey Geesler</p> <p><a href="mailto:Kelsey.Geesler@pennmedicine.upenn.edu">Kelsey.Geesler@pennmedicine.upenn.edu</a></p> <p>Cell: 215-300-1194</p>
HEADSHOTS	Schedule a virtual Penn Medicine headshot with a professional photographer using your own phone — any time, any place that works for you.	<p>Sign up via this link:</p> <p><a href="https://lp.pennmedicine.org/internal/headshots">https://lp.pennmedicine.org/internal/headshots</a></p>
Philanthropy/ Penn Alumni	Development and Alumni Relations - <a href="https://www.alumni.upenn.edu/s/1587/gid2/16/start.aspx?gid=2&amp;pgid=61">https://www.alumni.upenn.edu/s/1587/gid2/16/start.aspx?gid=2&amp;pgid=61</a>	<p>Our contacts:</p> <p>Lindsey Walker 215-898-3037</p> <p>Caroline Harris 215-573-2993</p>
Chair/Administration	Executive Assistant to the Chair – all scheduling, appointment and manager of academic related activity for Neurology	Sonja Ogden 215-662-3389
Conference Room Schedules	<p>Our internal conference rooms are:</p> <p>3 Gates Lobby – capacity of 35-40 people</p> <p>3 Old Gates – capacity of 20-25 people</p> <p>3 Dulles – capacity of 8-12 people</p> <p>Additional conference rooms can be reserved through Workplace@PennMedicine: <a href="#">Room Reservation - Home (upenn.edu)</a></p>	<p>Jill Bautista</p> <p>Sonja Ogden</p> <p>Vanna Hing</p>
Neurology Social Media	<p>Twitter: @pennneurology</p> <p>Facebook: Penn Neurology</p> <p>Instagram: penn_neurology_residency</p>	<p>Sonja Ogden</p> <p>Laura Stein, MD</p>
Research Support Services	ORS provides administrative support to faculty and departmental managers for sponsored project activities. ORS is responsible for proposal submission and agreement negotiation for federal sponsors and non-profit sponsors. ORS is responsible for all post-award activities, regardless of sponsor.	<a href="http://www.upenn.edu/researchservices/">http://www.upenn.edu/researchservices/</a>

IMPORTANT WEBSITES	Penn Medicine	University of Penn
Main Website	<a href="#">University of Pennsylvania Health System   Penn Medicine</a>	<a href="https://www.upenn.edu/">https://www.upenn.edu/</a>
Benefits Homepage	<a href="#">HR&amp;YOU</a> <a href="#">Hidden Benefits</a>	<a href="https://medley.isc-seo.upenn.edu/penn_portal/u@penn.php">https://medley.isc-seo.upenn.edu/penn_portal/u@penn.php</a> <a href="https://www.hr.upenn.edu/PennHR/benefits-pay">https://www.hr.upenn.edu/PennHR/benefits-pay</a>
Computer Support	<a href="https://helpdesk.pmacs.upenn.edu/">https://helpdesk.pmacs.upenn.edu/</a>	
Direct Deposit Setup	<a href="#">PennforPeople</a>	<a href="http://www.finance.upenn.edu/comptroller/payroll/receiving_your_pay.shtml">http://www.finance.upenn.edu/comptroller/payroll/receiving_your_pay.shtml</a>
Directory	<a href="#">Home Page - PennPhonebook</a>	<a href="https://www.upenn.edu/directories/">https://www.upenn.edu/directories/</a>
Emergency Alert System		<a href="https://www.publicsafety.upenn.edu/pennready/upennalert/">https://www.publicsafety.upenn.edu/pennready/upennalert/</a>
Faculty Affairs and Professional Development		<a href="http://www.med.upenn.edu/fapd/">http://www.med.upenn.edu/fapd/</a>
HR	<a href="#">HR Policies</a> <a href="#">Meet Your HR Team</a>	
Intranet	<a href="https://uphsxnet.uphs.upenn.edu/home/">https://uphsxnet.uphs.upenn.edu/home/</a>	<a href="https://portal.apps.upenn.edu/penn_portal/u@penn.php">https://portal.apps.upenn.edu/penn_portal/u@penn.php</a>
Learning Portal	<a href="#">Knowledge Link</a>	
Maps		<a href="https://www.facilities.upenn.edu/maps">https://www.facilities.upenn.edu/maps</a>
MyPennMedicine	<a href="https://secure.mypennmedicine.org/MyPennMedicine/Authentication/Login">https://secure.mypennmedicine.org/MyPennMedicine/Authentication/Login</a>	<a href="https://secure.mypennmedicine.org/MyPennMedicine/Authentication/Login">https://secure.mypennmedicine.org/MyPennMedicine/Authentication/Login</a>
Parking		<a href="http://cms.business-services.upenn.edu/parking/">http://cms.business-services.upenn.edu/parking/</a>
Penn Medicine Intranet	<a href="http://uphsxnet.uphs.upenn.edu/home/">http://uphsxnet.uphs.upenn.edu/home/</a>	
Remote Access Portal	<a href="https://pennmedaccess.uphs.upenn.edu/vdesk/webtop.eui?webtop=/Common/webtop_prod&amp;webtop_type=webtop_full">https://pennmedaccess.uphs.upenn.edu/vdesk/webtop.eui?webtop=/Common/webtop_prod&amp;webtop_type=webtop_full</a>	



Service Ticket	<a href="https://uphsnet.uphs.upenn.edu/athenaselfservice/Account/Login?ReturnUrl=%2fathenaselfservice%2f">https://uphsnet.uphs.upenn.edu/athenaselfservice/Account/Login?ReturnUrl=%2fathenaselfservice%2f</a> UPHS HELP DESK 215-662-7474	
Setting up Voicemail	Telecommunications - 215-662-7474	<ul style="list-style-type: none"> <li>Email: service-requests@isc.upenn.edu</li> <li>Call: 6-6000</li> <li>Voicemail Access: 215-746-6800 (VOIP) or 215-898-6423 (Traditional)</li> </ul>
Time Card Management	<a href="#">e-Star</a>	<a href="https://www.workday.upenn.edu/">https://www.workday.upenn.edu/</a>
Travel and Reimbursement	For PEA reimbursements – Use Pennfor <a href="#">click here</a>	Concur - contact [Name] or your administrative support staff for more information.  URL: <a href="https://www.concursolutions.com/home.asp">https://www.concursolutions.com/home.asp</a>
ID badges (HUP and Penn Cards)	ID office: Silverstein Ground Floor (new location) oa od 7/24/2023 Building for HUP Badge	Penn Bookstore: for Penn ID
Holidays & Penn Academic Calendar		<a href="https://almanac.upenn.edu/articles/recognized-holidays-for-fiscal-year-2020">https://almanac.upenn.edu/articles/recognized-holidays-for-fiscal-year-2020</a> <a href="https://almanac.upenn.edu/penn-academic-calendar">https://almanac.upenn.edu/penn-academic-calendar</a>

PENN KEY SUPPORT (Mon-Fri 8AM TO 6PM) <https://pennkeysupport.upenn.edu/>

## <<<<DISCLAIMER>>>>

**THIS GUIDE WAS CREATED TO BE A HELPFUL TOOL. THE RESOURCES WERE COMPILED TO PROVIDE A VARIETY OF INFORMATION TOGETHER. UPDATES ARE USUALLY MADE ANNUALLY.**

These are only some of the benefits, resources and information about the University and Penn Medicine -- there are so many things to learn about what Penn has to offer, please visit this link for more information:

**PLEASE Visit:** [www.upenn.edu](http://www.upenn.edu)  
<https://www.pennmedicine.org/>

*THE INTRADEPARTMENTAL EQUITY COMMITTEE IS A SUBCOMMITTEE OF IDARE.  
WE WELCOME YOUR FEEDBACK AND SUGGESTIONS – Please send email to  
[IDARENeurology@pennmedicine.upenn.edu](mailto:IDARENeurology@pennmedicine.upenn.edu)*

